



High performance sightglass light fitting type R 100 deHSch, 100 W, Ex d e IIC T3 Gb, Ex t IIIC T195°C Db IP67, Ex II 2 G + D, on a basket centrifuge



High performance sightglass light fitting type 100 deHN, 100 W, 24 V, Ex d e IIC T4 Gb, Ex t IIIC T130°C Db IP67, Ex II 2 G + D, foot ring fixation on sightglass to DN 28120, PN 10, DN 125

## Sightglass light fittings for use in hazardous areas Series R 50 deH, R 100 deH, 100 deH The power package

The high performance explosion-proof types R 50 deH, R 100 deH and 100 deH represent, within their temperature classification, the most powerful sightglass light fittings presently available in Europe. Using these light fittings, new levels of **extremely brilliant** process illumination may be achieved. Efficient manufacturing techniques coupled with extensive component stocks, result in an interesting pricevalue ratio and short delivery times.

### Application:

In hazardous areas for the illumination of large vessels, tanks, columns, silos, reactors or closed containers with light absorbing linings or contents, for TV-monitoring applications or any situation where high lighting levels are required. ATEX equipment protection level (EPL): Gb (zones 1 and 2) and Db (zones 21 and 22).

### Operating conditions:

The light fittings are completely **independent** of the vessel internal pressure or vacuum. They are also **admitted** for use in food processing applications.

### Electrical data:

Supply: 24 V, AC or DC  
Power ratings: See table overleaf

### Enclosure protection degree:

IP67, dust tight and protected against the effects of temporary immersion to EN 60529 / DIN VDE 0470 part 1

### Construction and materials:

Housing of corrosion resistant cast aluminium alloy (Anticorodal, <1% Mg). The housings may, on request and at extra charge, be painted with a two component acryl based colour. Cable glands M 20 x 1.5, internal connection suitable for wires up to 2.5 mm<sup>2</sup>. An additional external earth terminal of 4 mm<sup>2</sup> is provided. Built-in special reflector with halogen bulb to produce a concentrated ("spot") or a wide ("flood") beam as required. Standard version: "Spot".

### Fixation systems:

The following well proven standard fixation systems are available:

- Tension spring fixation ... Z
  - Flange fixation ... F
  - Tilting hinge fixation ... Sch
  - Foot ring fixation ... N
- Please refer overleaf for dimensions

### Mounting:

- On sightglasses to DIN 28120 / 28121 or similar:

Nominal diameter (DN)		50	80	100	125	150	200
Sightglass to DIN 28120 (A)		A	A	A	A	A	A
Sightglass to DIN 28121 (B)		B	B	B	B	B	B
Type	Fixation						
R 50 deH / R 100 deH	...N	•	•	•	•	•	•
	...Z			•	•	•	
	...Sch			•	•	•	•
100 deH	...N		•	•	•	•	•
	...Z					•	•
	...Sch				•	•	•

- On screwed ("dairy" type) sightglasses similar to DIN 11851: On special grooved collar nuts. (On enquiry please state the nominal diameter [DN]). (**Only** types R 50 deH / R 100 deH with foot ring fixation "N")
- On sightflow indicators:  
With the tilting hinge fixation "Sch", the foot ring fixation "N" or with specific adaptation by the customer.

### Additional equipment:

Please refer to possibilities overleaf

### Remarks:

The light fittings may be **installed in any position without restriction**. There is **no prescription** as to the quality or materials of the supply cable.

## Survey on standard types Additional equipment Technical data Dimensions

Type designation	R 50 deH	R100deH	100 deH
Nominal rating (W)	50	100	100
Terminal voltage(V)	12 / 24	24	24
Bulb	Halogen		
Socket	GY 6.35		
Weight <sup>1)</sup> (kg)	3,6	3,6	6,7
Ignition protection type to EN 60079-0 / 60079-1 / 60079-7 / 60079-31	Ex d e IIC Gb Ex t IIIC Db IP67		
Explosion groups	IIC / IIIC		
Temperature class G / D <sup>2)</sup>	T4 / T130°C	T3 / T195°C	T4 / T130°C
ATEX	Ex II 2 G + D		

<sup>1)</sup> The indicated weight refers to the light fitting only. The weight of the fixations "Z", "F" and "Sch" is 0.3 kg each.

<sup>2)</sup> T<sub>a</sub> = - 20°C / + 40°C (T<sub>a</sub> up to + 60°C on request)



### Vibration absorbers (silent blocks) ... G

Vibrations from the surrounding plant can have a deleterious effect on the lifetime even of halogen bulbs. Vibration absorbers made from chemically and thermally resistant silicone are offered for use with the tension spring fixation ... Z (Not available for type 100 deH).



### Transport handle ... T<sub>1</sub>

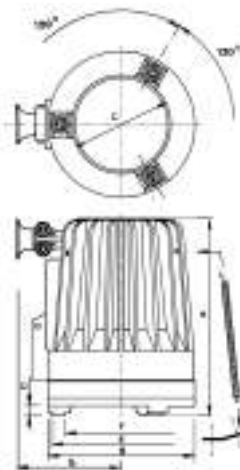
This ergonomic and insulated handle makes transport around the plant easy, and also facilitates the use of the light fitting for inspection inside a vessel on a trailing lead (for types R 50 deH / R 100 deH).



### Paint finish ... K

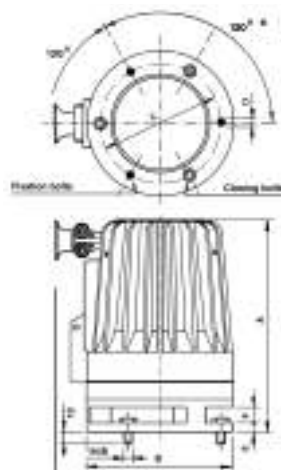
The special two component acrylic paint finish protects against corrosion in excessively aggressive environments, and may satisfy customers special aesthetic requirements. RAL 9001 is standard, other colours on demand.

### Tension spring fixation ... Z



	A	B	C	D	E	F	G
R 50 deH	218	145	95	11	139	115	122
R 100 deH	232	196	130	14	190	136	133

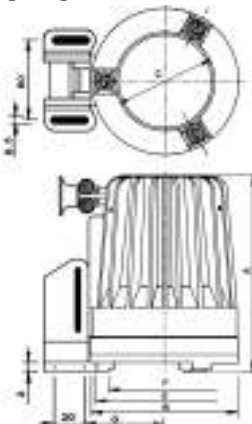
### Flange fixation ... F



	A	B	C*	D*	E	F	G
R 50 deH	232	145	115	8,5	9	16	122
R 100 deH	246	196	165	8,5	8	20	133

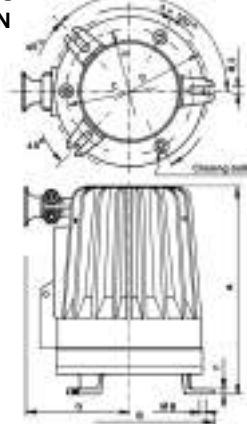
\* Other non standard flanges on request

### Tilting hinge fixation ... Sch



	A	B	C	D	E	F	G
R 50 deH	218	145	95	3	139	115	75
R 100 deH	232	196	130	3	190	136	103

### Foot ring fixation ... N



	A	B	C	D	E	F	G
R 50 deH	241	165	120	155	135	6	122
R 100 deH	255	250	165	235	180	8	133

Non standard fixation systems on request

Branch office / exclusive agent:

Do you wish for more information about our wide range of light fittings for use in hazardous and safe areas, about our range of circular sightglasses to DIN 28120/28121, screwed sightglasses similar to DIN 11851, rectangular or D-ended sightglasses, pipeline flow indicators, centrally or sideways operated wipers, hinged sightglasses, spraying devices, camera systems for hazardous areas or our complete sight and lightglass units VETROLUX®? Are you interested in other types, special versions or different protection degrees? If yes, please contact us, our branch office or our local agents – it is our business! You will find the necessary indications about our sales network on the Internet.

All dimensions in mm.

Subject to changes without preliminary notice.



# MAX MÜLLER AG

## PROCESS ILLUMINATION AND VISUAL OBSERVATION SYSTEMS

Hagmattstrasse 19 • CH - 4123 Allschwil / Switzerland

Telephone +41 61 487 92 92 • Telefax +41 61 487 92 99

www.maxmuellerag.com E-Mail: blt@maxmuellerag.com